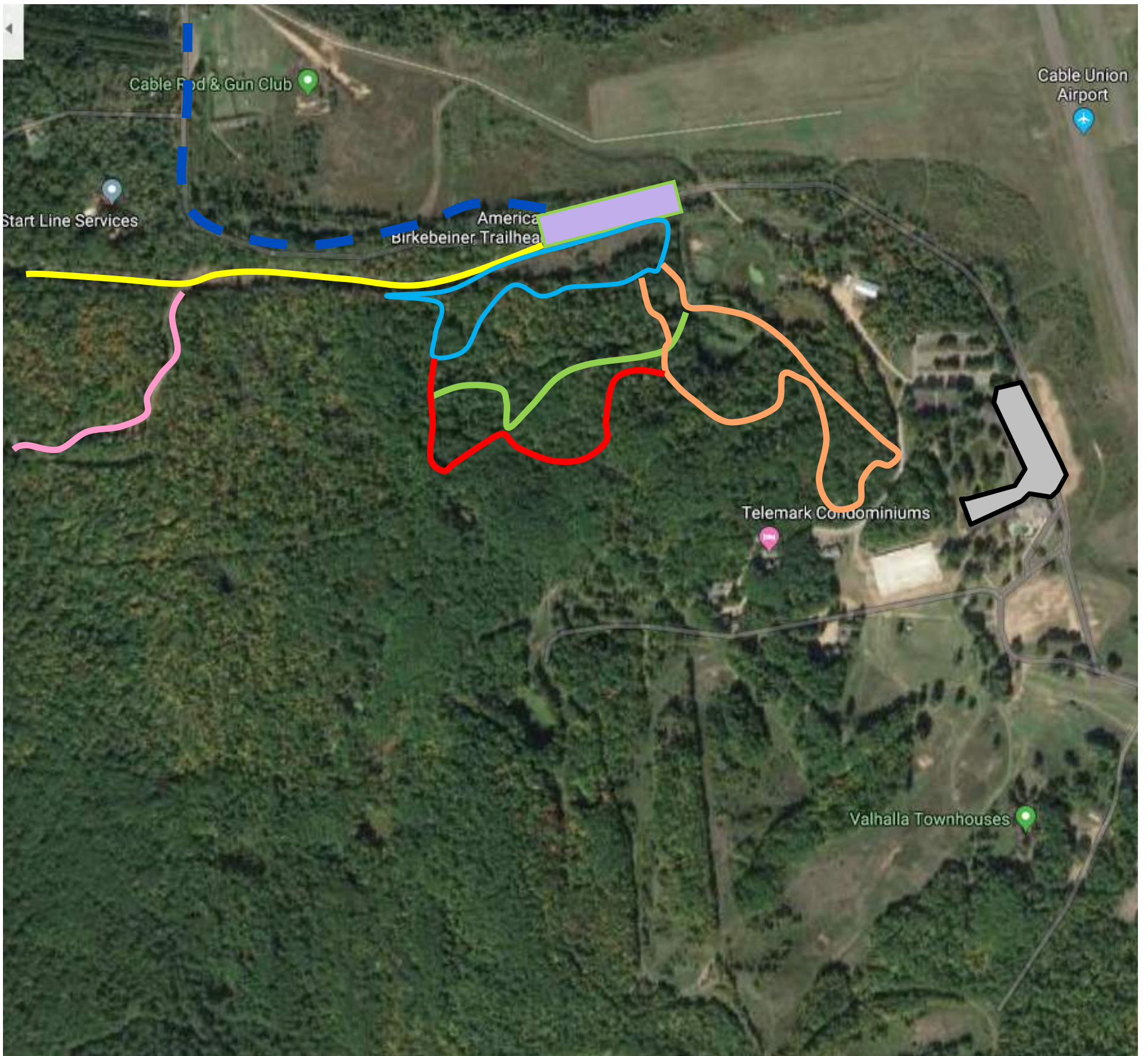






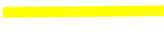




The Machine Made Snow Loops at American Birkebeiner Trail Head



-  Birkie Stadium/Korte Loop (800M)
-  Nordmor Loop (1.25K)
-  Birkie Roller (600M)
-  World Cup (800M)

-  American Birkebeiner Trail Head
-  McNaught Rd—Access from Cable
-  Birkie Skate Trail
-  Birkie Classic Trail
-  Old Telemark Lodge